

Community Assessment Service Centers (CASC)

- CASCs act as the entry point for any County resident seeking Substance Use Disorder (SUD) treatment.
- CASCs provide SUD screening, assessment, and treatment referral services.
- CASCs work closely with a network of SUD treatment agencies, mental health providers, domestic violence agencies, and other community-based organizations.



Helpful Resources

12-Step

Alcoholics Anonymous

1 (800) 923-8722

Crystal Meth Anonymous

1 (213) 488-4455

Cocaine Anonymous

1 (310) 216-4444

Marijuana Anonymous

1 (323) 964-2374

Narcotics Anonymous

1 (800) 863-2962

Nicotine Anonymous

1 (877) 879-6422

Sober Living

<http://soberhousing.net>

Department of Mental Health

1 (800) 854-7771

To learn more, visit:

County of Los Angeles,

Department of Public Health

Substance Abuse Prevention & Control

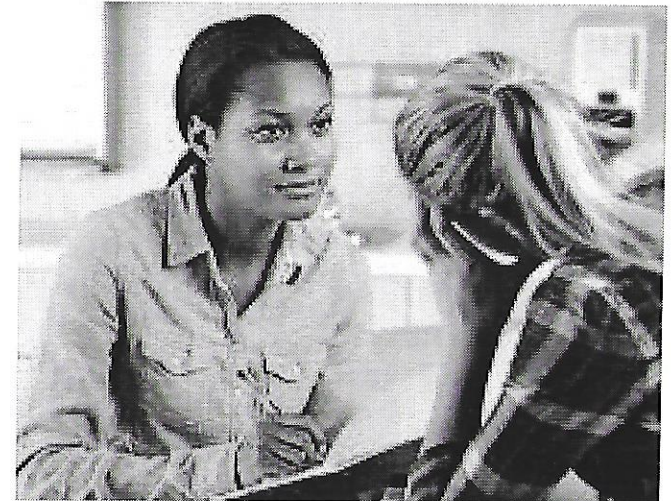
<http://publichealth.lacounty.gov/sapc>

If you or a loved one are looking for
Substance Use Disorder treatment Call:

1 (800) 564-6600

Substance Use Disorder Treatment in Los Angeles County

Community Assessment
Service Centers



COUNTY OF LOS ANGELES
Public Health



You may need treatment if...

(Please answer the following)

1. In the last three months, have you felt you should cut down or stop drinking or using drugs?
Yes No
2. In the last three months, has anyone annoyed you or gotten on your nerves by telling you to cut down or stop drinking or using drugs?
Yes No
3. In the last three months, have you felt guilty or bad about how much you drink or use drugs?
Yes No
4. In the last three months, have you been waking up wanting to have an alcoholic drink or use drugs?
Yes No

If you answered yes to at least two questions, please contact your doctor or call 1-800-564-6600 to find a local SUD treatment program.

The above questions are from the CAGE-AID Questionnaire

Frequently Asked Questions

I need treatment. What should I do?

Call the Community Assessment Service Center (CASC) for an assessment and referral to Substance Use Disorder (SUD) treatment.

What happens in an assessment?

A CASC assessor will ask you a series of questions to determine the level of care you may need. The assessor will also assist with pretreatment counseling, provide support, discuss triggers for SUD use, and provide information about treatment and other services you may be eligible for.

Will this cost money?

There is no fee for an SUD assessment; however, there is a fee for SUD treatment. **Treatment will not be denied if you are not able to pay.** The treatment provider will work with you to determine what you can pay.

**For more information call:
1 (800) 564-6600**



Substance Use Disorder Treatment Services Available in Los Angeles County

- Detox – Residential medical detoxification services.
- Residential – Or inpatient, clients stay at the treatment facility.
- Intensive Outpatient – Clients attend 3-hr treatment appointments at least three times a week.
- Outpatient – Clients attend treatment a few times a week.
- Methadone Maintenance – Clients on methadone receive daily doses.
- Recovery Support Services – Services that help clients maintain recovery.